

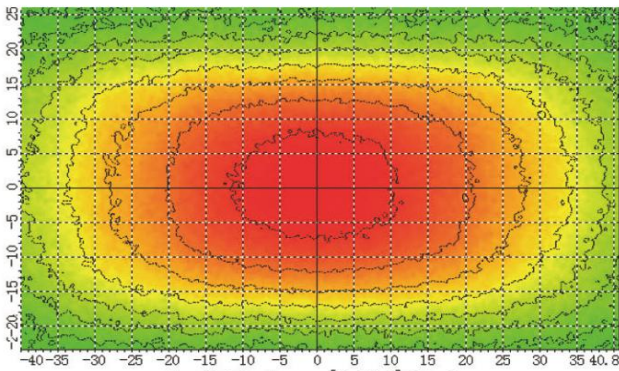
**NW-S21**



**FEATURE**

NW-S21, solid aluminum housing for efficient heat dissipation prolongs lifespan  
 Adopts 21pcs high power LED, 80 degree angle flood beam  
 Rated IP69K for dust and water resistance  
 Strong and robot design, suit for trailer&truck, heavy duty vehicles and construction vehicles

INTENSITY DISTRIBUTION



CODE	Spec
LED	21pcs 3W LED
Color Temp	6000K
Effective lumen	4320lm
Effective Power	36W
Waterproof	IP69K
Voltage	10-30V
Dimension	160x111x75mm
Working temperature	-40-80°C